

U . S . S O C C E R F E D E R A T I O N



U.S. Soccer Referee Program License Evolution



IT BEGINS WITH A REFEREE

REFEREE

REFEREE PATHWAY



GRASSROOTS

REFEREE



GRASSROOTS LICENSE CERTIFICATION



GRASSROOT CERTIFICATION REQUIREMENTS

ENROLLMENT	REGISTRATION
AGE*	13 YEARS OF AGE AND OLDER
PREVIOUS GAME EXPERIENCE*	NA
PREVIOUS CERTIFICATION EXPERIENCE*	NA
TRAINING	ONLINE + IN-PERSON GRASSROOTS MODULES
SAFETY AND COMPLIANCE	SAFESPORT TRAINED
LAWS OF THE GAME TEST	ONLINE – GRASSROOTS TEST
FITNESS TEST	NA – DETERMINED BY COMPETITION
PRACTICAL EVALUATION	NA

GRASSROOTS

REFEREE



GRASSROOTS LICENSE RE-CERTIFICATION



GRASSROOT RE-CERTIFICATION REQUIREMENTS

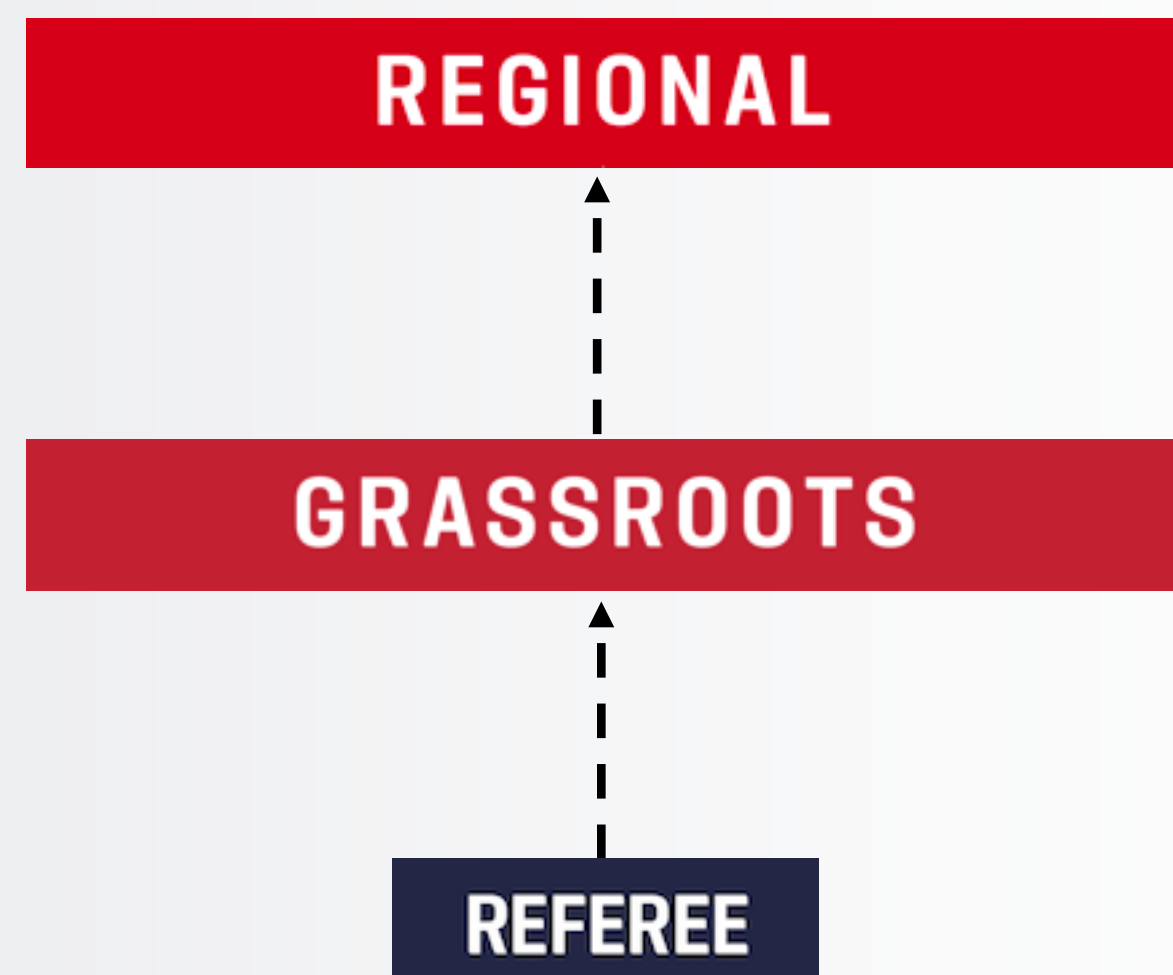
ENROLLMENT	REGISTRATION
PREVIOUS CERTIFICATION EXPERIENCE*	GRASSROOTS REFEREE
TRAINING	ONLINE OR SRC TRAINING
SAFETY AND COMPLIANCE	SAFESPORT TRAINED
LAWS OF THE GAME TEST	ONLINE – GRASSROOTS TEST
FITNESS TEST	NA – DETERMINED BY COMPETITION IF APPLICABLE
PRACTICAL EVALUATION	NA

GRASSROOTS

REFEREE



REFEREE PATHWAY

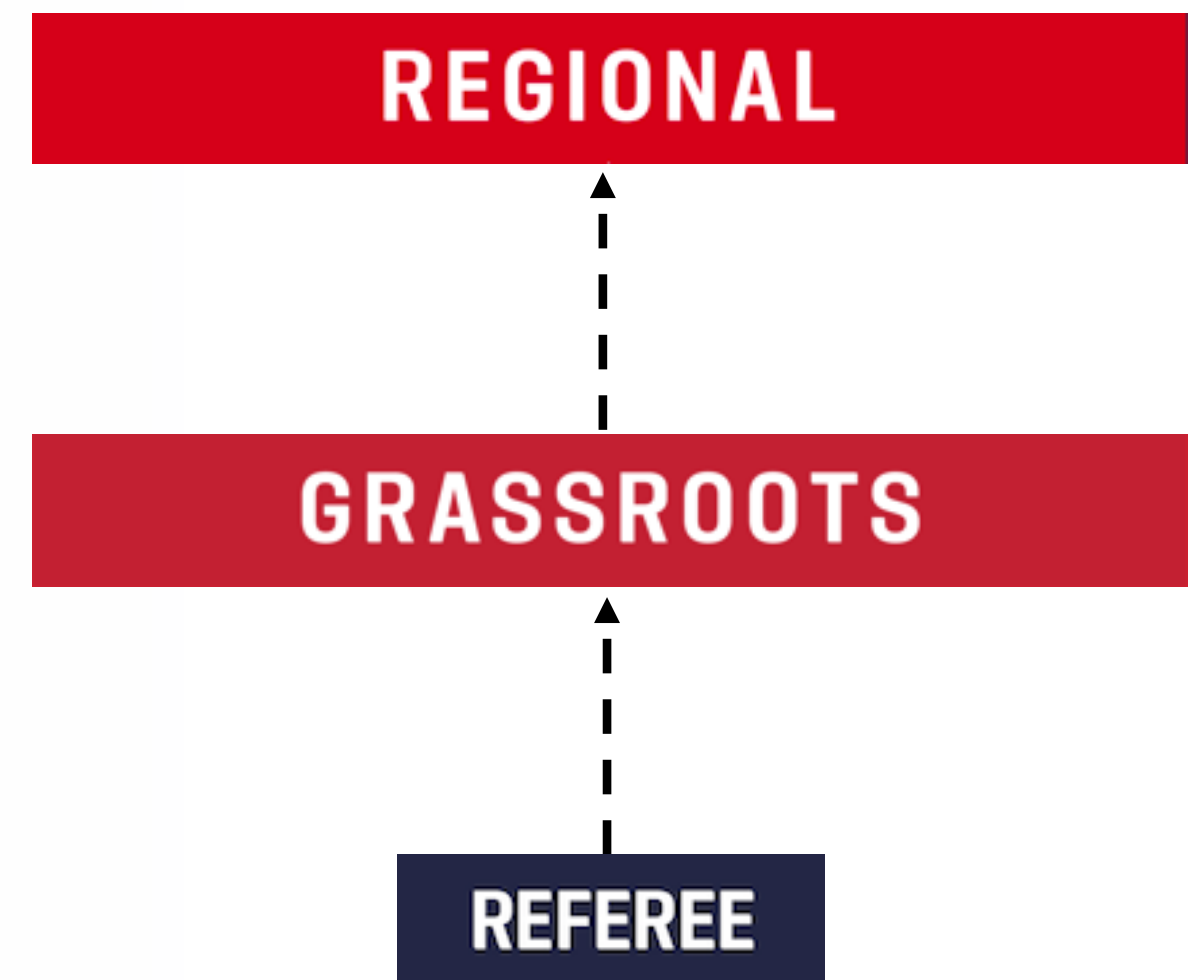


REGIONAL REFEREE LICENSE CERTIFICATION



REGIONAL CERTIFICATION REQUIREMENTS

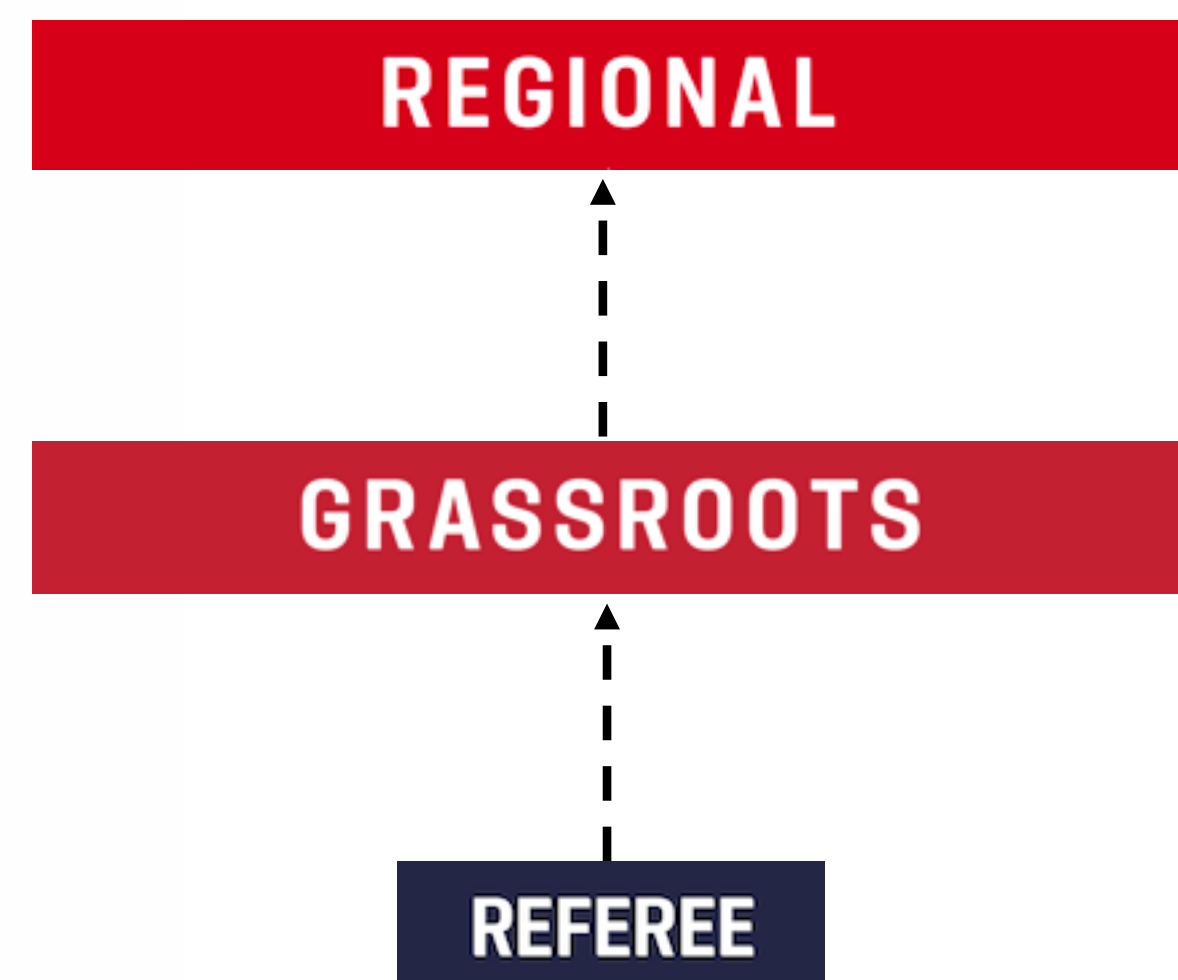
PREREQUISITES	
ENROLLMENT	REGISTRATION
AGE*	18 YEARS OF AGE AND OLDER
PREVIOUS GAME EXPERIENCE*	50 GAMES AS A REFEREE AND 25 AS AN ASSISTANT REFEREE AT THE LOCAL ADULT AMATEUR LEVEL
PREVIOUS CERTIFICATION EXPERIENCE*	MINIMUM OF THREE (3) YEARS AS GRASSROOTS REFEREE
TRAINING	REGIONAL REFEREE COURSE
SAFETY AND COMPLIANCE	SAFESPORT TRAINED
LAWS OF THE GAME TEST	ONLINE – REGIONAL TEST
FITNESS TEST	SPRINT / INTERVAL TESTS (USSF REGIONAL REFEREE TEST)
PRACTICAL EVALUATION	MINIMUM OF TWO (2) PASSING EVALUATIONS AS A REFEREE AT THE ADULT AMATEUR LEVEL. ONE (1) PASSING EVALUATION AS AN ASSISTANT REFEREE AT THE ADULT AMATEUR LEVEL. ONE REFEREE EVALUATION CAN BE AT THE HIGHEST YOUTH LEVEL. (U18 OR U19)



REGIONAL REFEREE LICENSE RE-CERTIFICATION



REGIONAL RE-CERTIFICATION REQUIREMENTS	
ENROLLMENT	REGISTRATION
TRAINING	ONLINE OR SRC TRAINING
SAFETY AND COMPLIANCE	SAFESPORT TRAINED
LAWS OF THE GAME TEST	ONLINE – REGIONAL TEST
FITNESS	SPRINT / INTERVAL TESTS (USSF REGIONAL REFEREE TEST)
PRACTICAL EVALUATION	MINIMUM OF TWO (2) PASSING EVALUATIONS AS A REFEREE THE ADULT AMATEUR LEVEL. ONE (1) PASSING EVALUATION AS AN ASSISTANT REFEREE AT THE ADULT AMATUER LEVEL. ONE REFEREE EVALUATION CAN BE AT THE HIGHEST YOUTH LEVEL. (U18 OR U19)



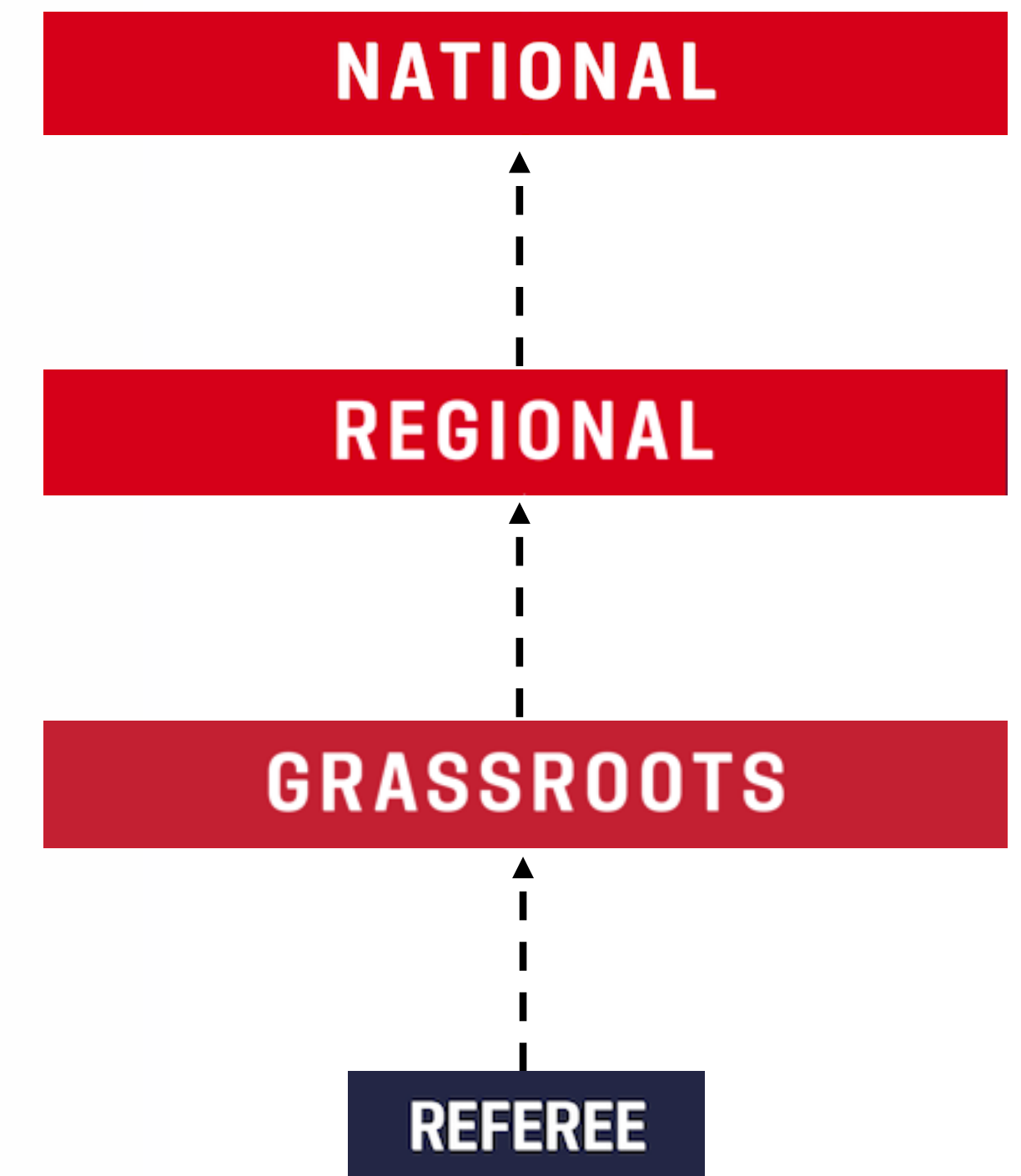
REFEREE PATHWAY



NATIONAL REFEREE / ASSISTANT REFEREE LICENSE CERTIFICATION



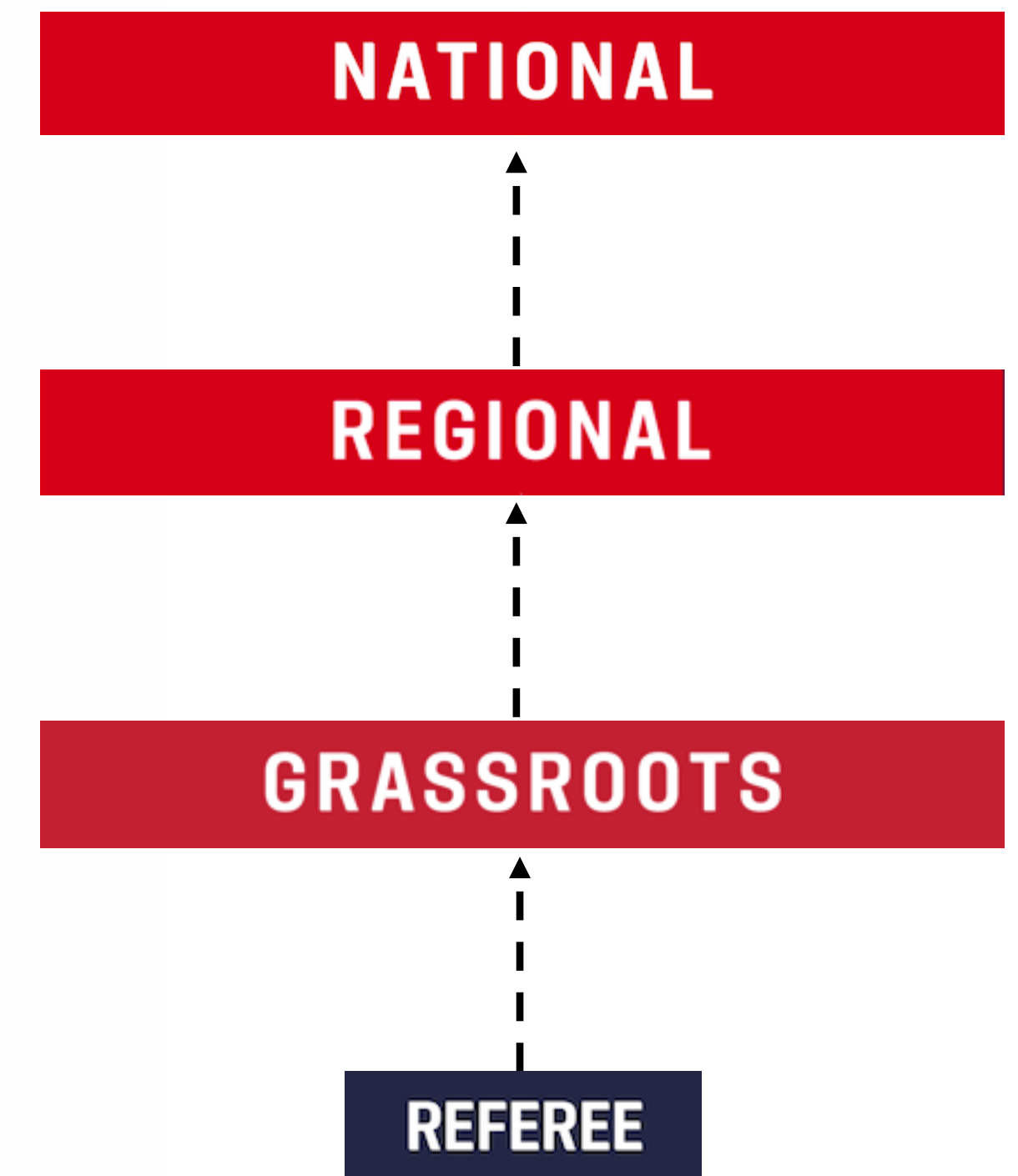
NATIONAL CERTIFICATION REQUIREMENTS	
ENROLLMENT	SELECTED BY U.S. SOCCER
PREVIOUS GAME EXPERIENCE	100 GAMES AT THE ADULT AMATUER LEVEL REFEREE (50) AND ASSISTANT REFEREE (50)
PREVIOUS CERTIFICATION EXPERIENCE	MINIMUM OF TWO (2) YEARS AS REGIONAL REFEREE
TRAINING	NATIONAL CAMP
SAFETY AND COMPLIANCE	SAFESPORT TRAINED NATIONAL BACKGROUND CHECK
LAWS OF THE GAME TEST	ONLINE – NATIONAL TEST
FITNESS TEST	FIFA FITNESS TEST (TRACK & GENDER SPECIFIC)
PRACTICAL EVALUATION	MINIMUM OF THREE (3) PASSING NATIONAL EVALUATIONS IN SELECTED TRACK (PERFORMED BY 3 DIFFERENT NATIONAL COACHES) USING LOCAL ADULT AMATUER GAMES, NPSL, USL LEAGUE 2 AND OPEN CUP GAMES



NATIONAL REFEREE / ASSISTANT REFEREE LICENSE RE-CERTIFICATION



NATIONAL RE-CERTIFICATION REQUIREMENTS	
ENROLLMENT	SELECTED BY U.S. SOCCER
PREVIOUS GAME EXPERIENCE	12 GAMES AS A REFEREE OR 12 GAMES AS AN ASSISTANT REFEREE IN AMATEUR ADULT GAMES OR HIGHER LEVEL (PROFESSIONAL, INTERNATIONAL, INTL YOUTH 17+)
PREVIOUS CERTIFICATION EXPERIENCE	PREVIOUS YEAR AS A NATIONAL OFFICIAL
TRAINING	NATIONAL CAMP
SAFETY AND COMPLIANCE	SAFESPORT TRAINED NATIONAL BACKGROUND CHECK
LAWS OF THE GAME TEST	ONLINE – NATIONAL TEST
FITNESS TEST	FIFA FITNESS TEST (TRACK & GENDER SPECIFIC)
PRACTICAL EVALUATION	MINIMUM OF THREE (3) PASSING NATIONAL EVALUATIONS IN SELECTED TRACK BY THREE (3) DIFFERENT NATIONAL REFEREE COACHES



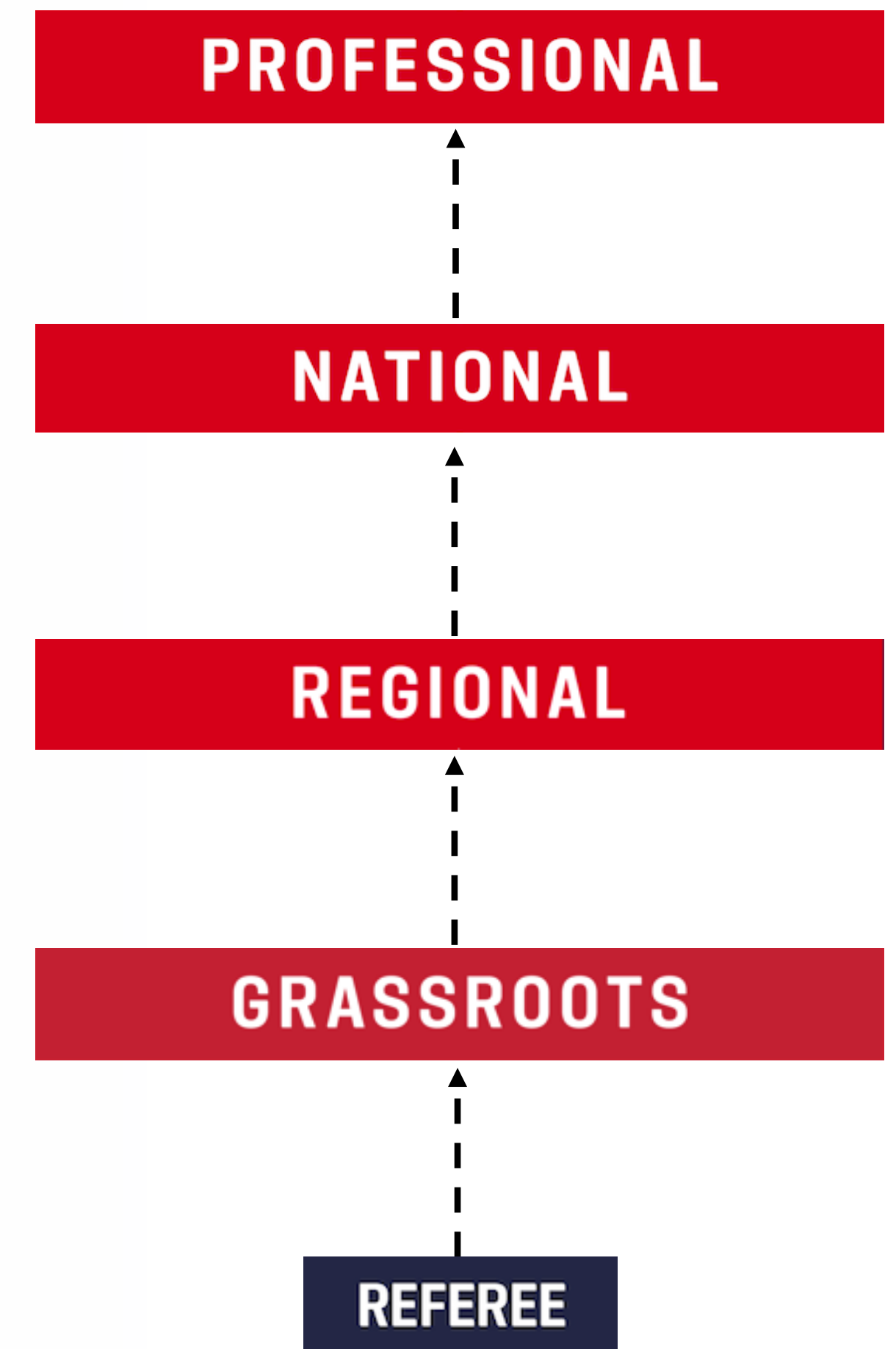
REFEREE PATHWAY



PROFESSIONAL LICENSE CERTIFICATION



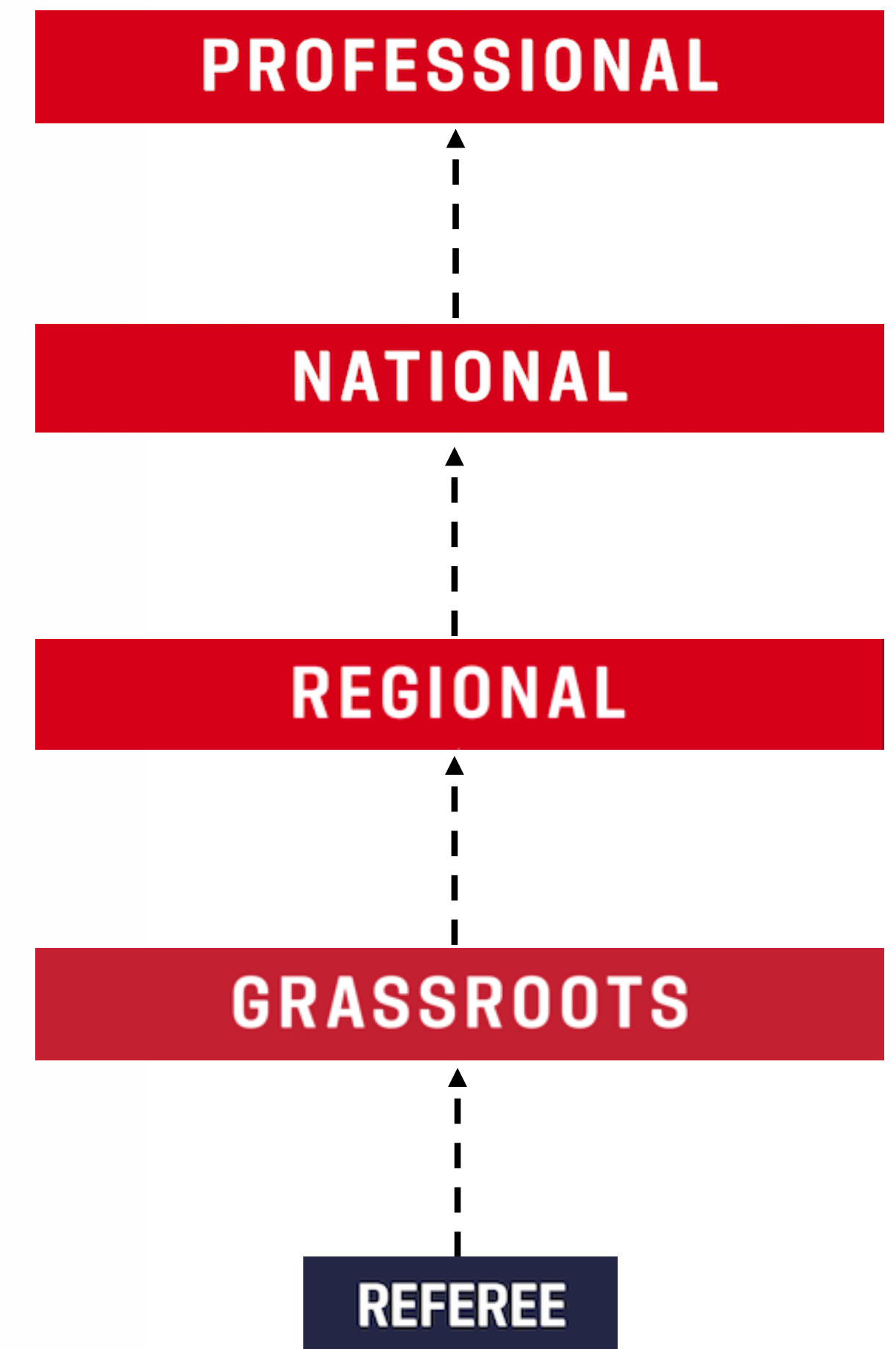
PROFESSIONAL CERTIFICATION REQUIREMENTS	
ENROLLMENT	SELECTED BY PRO
PREVIOUS GAME EXPERIENCE	50 GAMES AS A REFEREE OR 50 GAMES AS AN ASSISTANT REFEREE (AS DETERMINED BY PRO)
PREVIOUS CERTIFICATION EXPERIENCE	MINIMUM OF 2 YEARS AS NATIONAL REFEREE
TRAINING	PRO PRESEASON CAMP
SAFETY AND COMPLIANCE	SAFESPORT TRAINED NATIONAL BACKGROUND CHECK
LAWS OF THE GAME TEST	ONLINE – NATIONAL TEST
FITNESS TEST	FIFA FITNESS TEST (TRACK & GENDER SPECIFIC)
PRACTICAL EVALUATION	MINIMUM OF 3 PASSING NATIONAL ASSESSMENTS (BASED ON PRO/PSRA CBA)



PROFESSIONAL LICENSE RE-CERTIFICATION



PROFESSIONAL RE-CERTIFICATION REQUIREMENTS	
ENROLLMENT	SELECTED BY PRO
PREVIOUS GAME EXPERIENCE	50 GAMES AS A REFEREE OR 50 GAMES AS AN ASSISTANT REFEREE (AS DETERMINED BY PRO)
PREVIOUS CERTIFICATION EXPERIENCE	MINIMUM OF 2 YEARS AS NATIONAL REFEREE
TRAINING	PRO PRESEASON CAMP
SAFETY AND COMPLIANCE	SAFESPORT TRAINED NATIONAL BACKGROUND CHECK
LAWS OF THE GAME TEST	ONLINE – NATIONAL TEST
FITNESS TEST	FIFA FITNESS TEST (TRACK & GENDER SPECIFIC)
PRACTICAL EVALUATION	MINIMUM OF 3 PASSING NATIONAL ASSESSMENTS (BASED ON PRO/PSRA CBA)



REFEREE PATHWAY



FIFA CERTIFICATION



FIFA CERTIFICATION REQUIREMENTS	
ENROLLMENT	RECOMMENDED BY U.S. SOCCER REFCO APPROVED BY USSF BOD
PREVIOUS GAME EXPERIENCE	TWO (2) YEARS WORKING IN THE DIVISION I PROFESSIONAL LEAGUES
PREVIOUS CERTIFICATION EXPERIENCE	MINIMUM OF TWO (2) YEARS AS PROFESSIONAL REFEREE
TRAINING	PRO PRESEASON CAMP
SAFETY AND COMPLIANCE	SAFESPORT TRAINED NATIONAL BACKGROUND CHECK
LAWS OF THE GAME TEST	ONLINE – NATIONAL TEST
FITNESS TEST	FIFA FITNESS TEST (TRACK & GENDER SPECIFIC)
PRACTICAL EVALUATION	MINIMUM OF THREE (3) PASSING NATIONAL EVALUATIONS OR PRO REQUIREMENT TO WORK DIVISION I PROFESSIONAL LEAGUES



FIFA RE-CERTIFICATION



FIFA RE-CERTIFICATION REQUIREMENTS	
ENROLLMENT	RECOMMENDED BY U.S. SOCCER REFCO APPROVED BY USSF BOD
PREVIOUS GAME EXPERIENCE	TWO (2) YEARS WORKING IN THE DIVISION I PROFESSIONAL LEAGUES
PREVIOUS CERTIFICATION EXPERIENCE	MINIMUM OF TWO (2) YEARS AS PROFESSIONAL REFEREE
TRAINING	PRO PRESEASON CAMP
SAFETY AND COMPLIANCE	SAFESPORT TRAINED NATIONAL BACKGROUND CHECK
LAWS OF THE GAME TEST	ONLINE – NATIONAL TEST
FITNESS TEST	FIFA FITNESS TEST (TRACK & GENDER SPECIFIC)
PRACTICAL EVALUATION	MINIMUM OF THREE (3) PASSING NATIONAL EVALUATIONS OR PRO REQUIREMENT TO WORK DIVISION I PROFESSIONAL LEAGUES





REFEREE PATHWAY



U . S . S O C C E R F E D E R A T I O N



ussoccer.com